

# ROTTLER

## F67A Multi Purpose Machining Center



**THE CUTTING EDGE**

# F67A

## Programmable Automatic Machining Center

Hardened Box Way Column



Precision Ball Screws



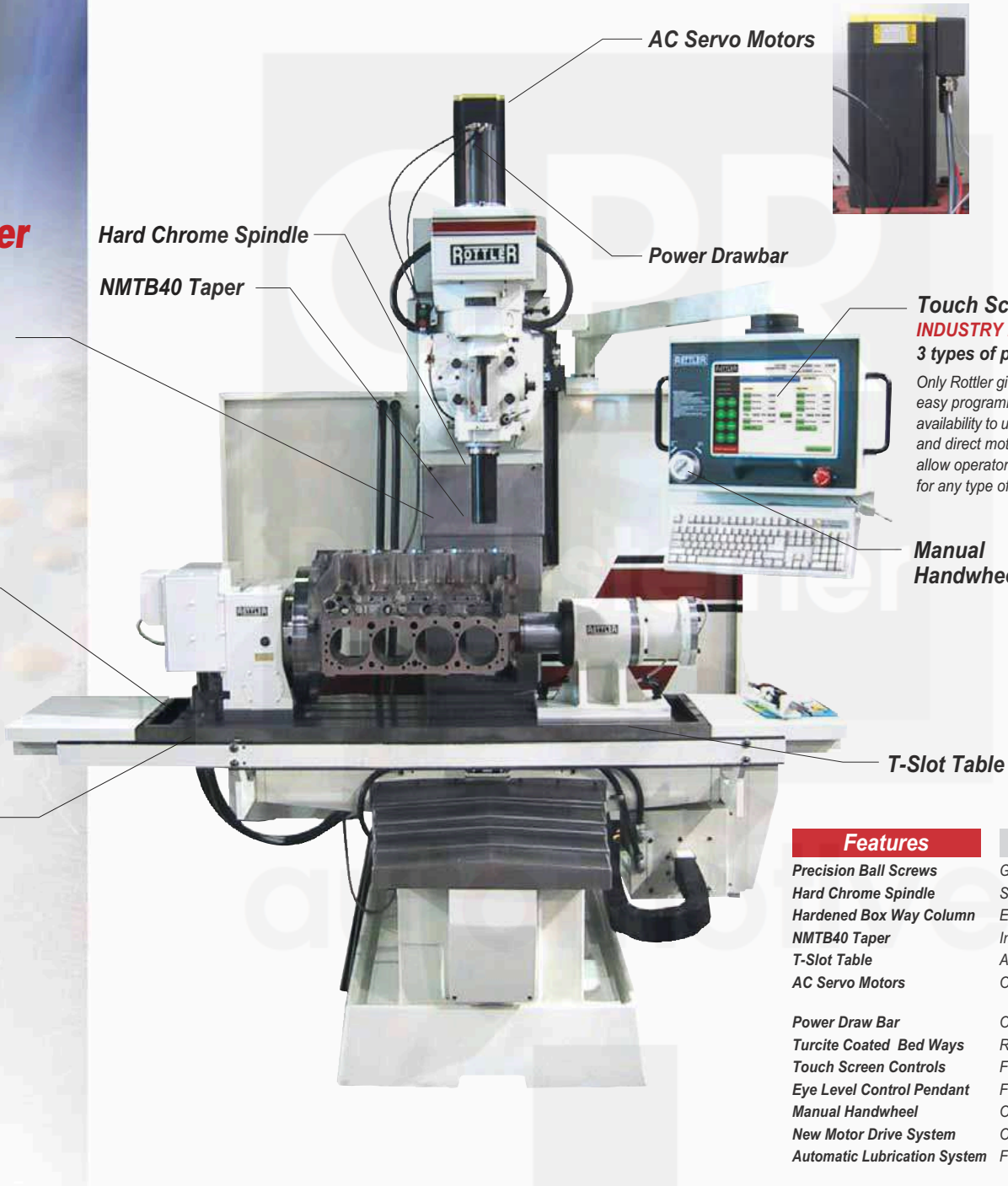
Turcite Coated Bedways

### F67A Exclusive



Work head tilts either side of center. This enables the Rottler F67A to machine reliefs in 426 Chrysler Hemi blocks to improve pushrod geometry.

**THE CUTTING EDGE**



Hard Chrome Spindle

NMTB40 Taper

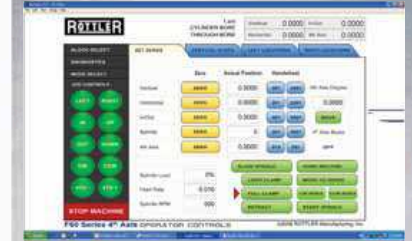
AC Servo Motors



Power Drawbar

**Touch Screen Control**  
**INDUSTRY EXCLUSIVE**  
**3 types of programming!**

Only Rottler gives you simple, fast and easy programming of machine, with availability to use G code programming and direct motion programming that allow operators to program machine for any type of job.



**Manual Handwheel**



**T-Slot Table**

### Features

- Precision Ball Screws
- Hard Chrome Spindle
- Hardened Box Way Column
- NMTB40 Taper
- T-Slot Table
- AC Servo Motors
- Power Draw Bar
- Turcite Coated Bed Ways
- Touch Screen Controls
- Eye Level Control Pendant
- Manual Handwheel
- New Motor Drive System
- Automatic Lubrication System

### Benefits

- Give long trouble free life and accurate movement to +.0005 or -.0005
- Super hard finish resists wear for years of operation
- Ensures exceptional rigidity for accurate machining of parts and long life
- Industry Standard for versatility
- Allows operator to clamp or fixture any job quickly and easily
- Offer maximum torque and performance throughout the rpm range for precise accuracy and increased productivity
- Offers finger tip changing of cutting tools for fast machining of blocks, heads or parts.
- Reduces friction or smooth movement, long life and accuracy
- For fast easy programming of machine
- For easy viewing and less floor clutter
- Offers operator infinite control of machine movement in all axis for quick & easy set-up
- Offers you increased dependability and ease of service
- For years of trouble free life and reduced wear

**THE CUTTING EDGE**



# Fixtures



Rottler's new pivot table allows quick set-up for line boring.



Rottler's patented 2 axis leveling table and universal quick clamping system for surfacing/milling heads, blocks and manifolds with CBN and PCD tooling.



Rottler's NEW Universal Quick Load/Unload Automatic Rotate 4th Axis Fixture and Software allows the control to rotate the block or cylinder head during the automatic machining cycle.



The block end truing fixture quickly attaches to the 4th axis rolover fixture or the precision performance fixture for exact alignment of transmission and engine block. Dowel truing for centralizing transmission and crankshaft centerline



Precision Performance Fixture references from the centerlines of crankshaft and camshaft for machining operations – precise bore locations and square block deck height. Bore and surface a V8 block in less than 30 minutes.

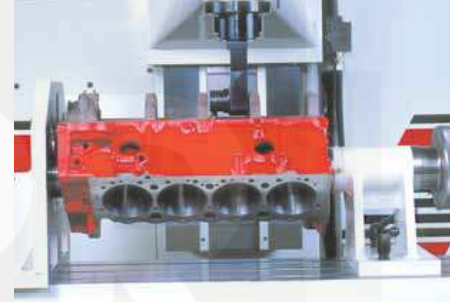


Lifter bore angles are accurately set with gage blocks in the Performance Fixture. Complete a lifter bushing job in less than one hour!



Cam tunnel modifications and roller bearing conversions. Some blocks allow main and cam line to be bored in one set up with extended slim line right angle drive.

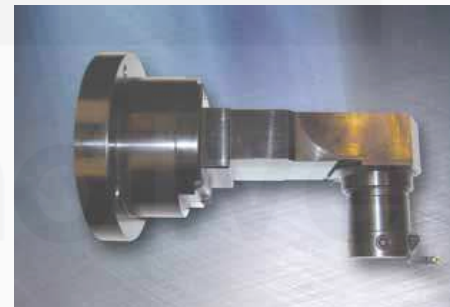
# Tooling



Precision line boring with Rottler's Special 90° Right Angle Drive with Insert Tooling provides perfectly round bores and straight lines! No honing necessary!



CBN cutter plate available in 10" (250mm) and 14" (360mm).



Thrust cutter for small block Chevy main thrusts installed in 90 degree right angle drive for main line boring. Circular interpolation allows Rottler machines to cut thrust on any block.



Single point Lifter Tooling and digital setting fixture for boring, facing and finishing lifter bores and bushes.



Renishaw probe.



Edge finder.



Boring and Sleeving Cutterhead, tool holders and Digital Setting Fixture