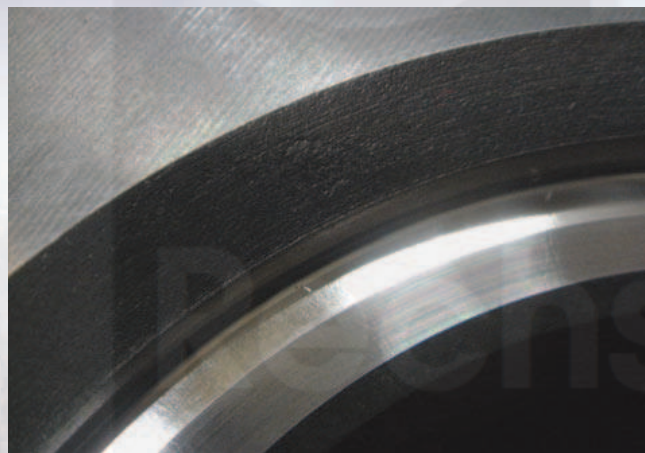
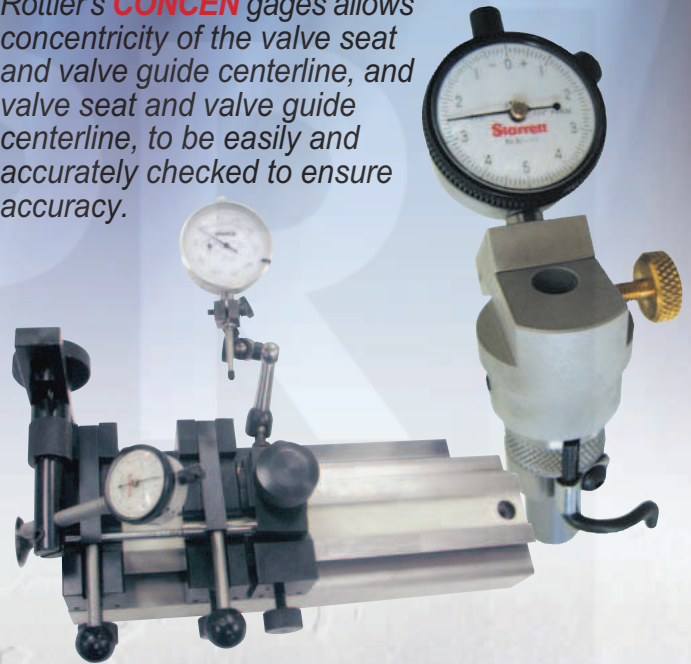


# What is **CONCEN**

Rottler's trade mark that guarantees that you our customer get the most accurate and versatile machine possible. Rottler combines precision carbide centering pilots with our light weight air float workhead to give you perfect centering with the valve guide. This guarantees the best **CONCEN** of valve seat to valve guide centerline in the industry.



Rottler's **CONCEN** gages allows concentricity of the valve seat and valve guide centerline, and valve seat and valve guide centerline, to be easily and accurately checked to ensure accuracy.



## Surface Finish

Fine grain carbide cutting inserts, precision spindle bearings and tooling, all combine to give perfect surface finish on machined valve seats.

## SG8 Specifications

Spindle diameter	3.150" 80mm
Maximum Spindle Travel	8" 203mm
Maximum Spindle Tilt (either side of zero)	15 degrees
Distance from Table to Spindle	19.5" 495mm
Valve Seat Diameter	.550" to 3.1" (14mm to 80mm)
Maximum Cylinder Head Length (with standard 360° rollover fixture)	44" 1118mm
Maximum Cylinder Head Length (with optional fixture)	50" 1270mm
Spindle Speed	40 to 400 rpm
Electrical Requirements	208 to 240 volt, single phase, 15 amp
Air Requirements	100 psi 6 Bar
Spindle Motor	1 HP/.75 kW
Floor Space Requirements	84" x 42" x 80" high 2134mm x 1067mm x 2032mm hgh
Shipping Dimensions	61" x 25" x 75" high 1549mm x 635mm x 1905mm high
Shipping Weight	2800 lbs. 1258 kg

Specifications and design subject to change without notice.